



Clarissa Road, Romford, RM6 4ND

Offers In Excess Of £475,000





Offers In Excess Of £475,000

# Clarissa Road

Romford, RM6 4ND

- EPC - D
- ENSUITE TO BEDROOM THREE
- GROUND FLOOR SHOWER ROOM
- 6 MINUTES WALK TO TO CHADWELL HEATH STATION
- DOUBLE GLAZED WINDOWS
- THREE BEDROOM HOUSE
- TWO RECEPTION ROOMS
- POTENTIAL FOR LOFT AND REAR EXTENSION
- SCHOOLS AND LOCAL AMENITIES CLOSE BY
- GAS CENTRAL HEATING

Nestled in the charming area of Clarissa Road, Chadwell Heath, this delightful terraced house offers a perfect blend of comfort and convenience. With three well-proportioned bedrooms, this property is ideal for families or those seeking extra space. The two reception rooms provide ample opportunity for relaxation and entertainment, making it easy to host gatherings or enjoy quiet evenings at home.

The house features two bathrooms, ensuring that morning routines run smoothly for everyone. The layout is thoughtfully designed to maximise space and functionality, catering to modern living needs.

Situated in a vibrant neighbourhood, residents will benefit from local amenities, schools, and transport links, making it an excellent choice for both commuting and leisure. This property presents a wonderful opportunity to create a warm and inviting home in a sought-after location. Whether you are looking to buy or rent, this terraced house on Clarissa Road is certainly worth considering.



## ENTRANCE

## RECEPTION ONE

14'11" into bay x 11'1" (4.57m into bay x 3.39m)

## RECEPTION TWO

12'2" x 9'1" (3.72m x 2.77m)

## KITCHEN

15'8" x 7'3" max (4.78m x 2.23m max)

## GROUND FLOOR SHOWER ROOM

5'4" x 3'5" (1.63m x 1.06m)

## STAIRS TO FIRST FLOOR

## BEDROOM ONE

16'8" x 14'10" into bay (5.10m x 4.53m into bay)

## BEDROOM TWO

12'3" x 8'0" (3.74m x 2.44m)

## BEDROOM THREE

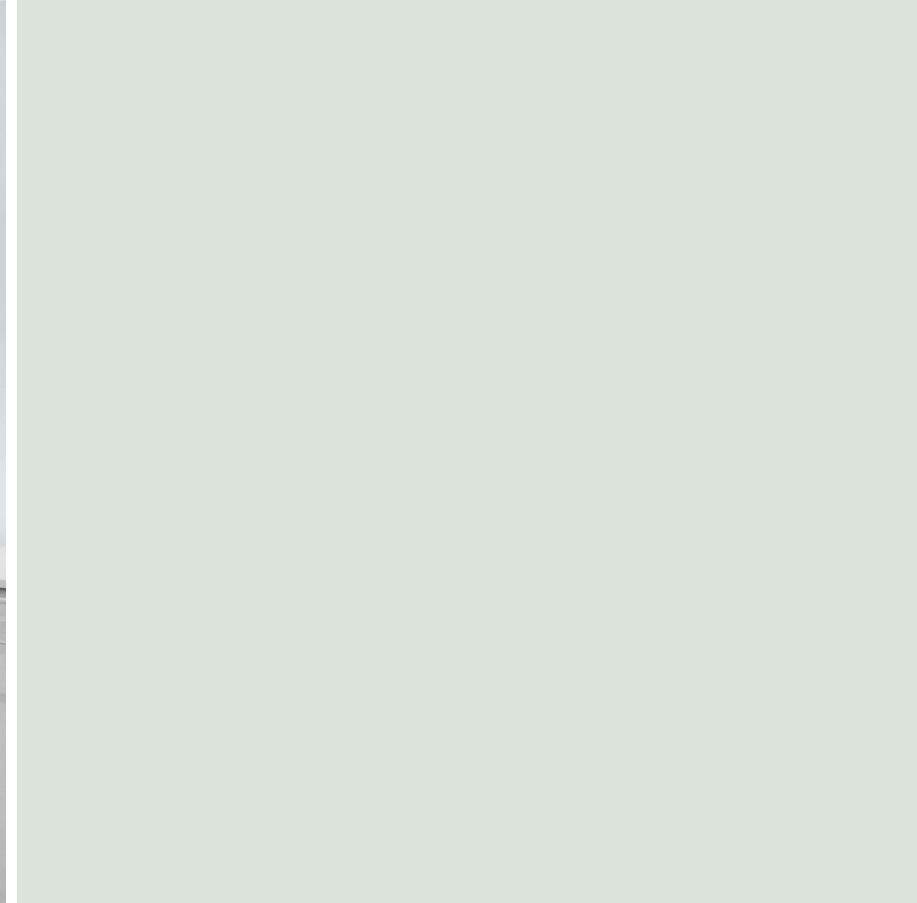
8'9" x 8'4" (2.68m x 2.56m)

## EN-SUITE BATHROOM

6'3" x 5'3" (1.92m x 1.62m)

## EXTERIOR

## AGENT NOTE



Directions

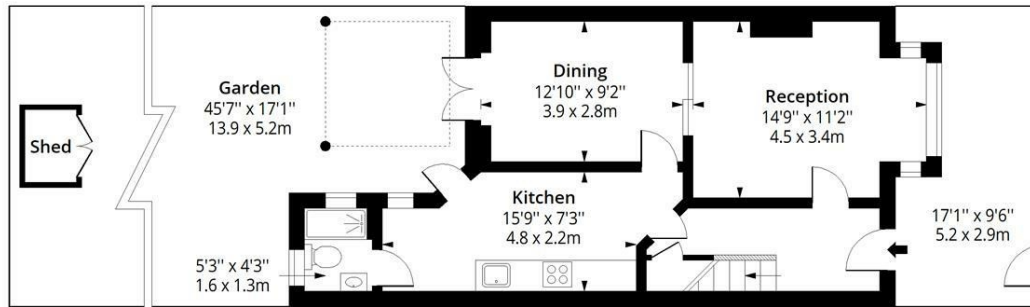
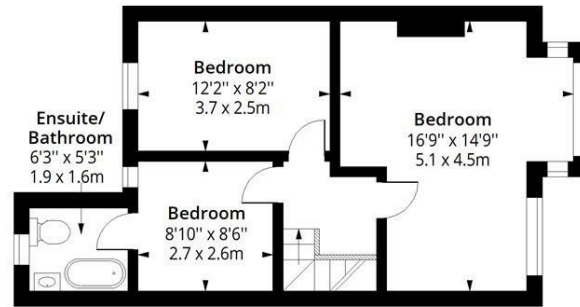




## Floor Plans

### Clarissa Road RM6

Approx. Gross Internal Area 987 Sq Ft - 91.69 Sq M  
 Approx. Gross Shed Area 15 Sq Ft - 1.39 Sq M

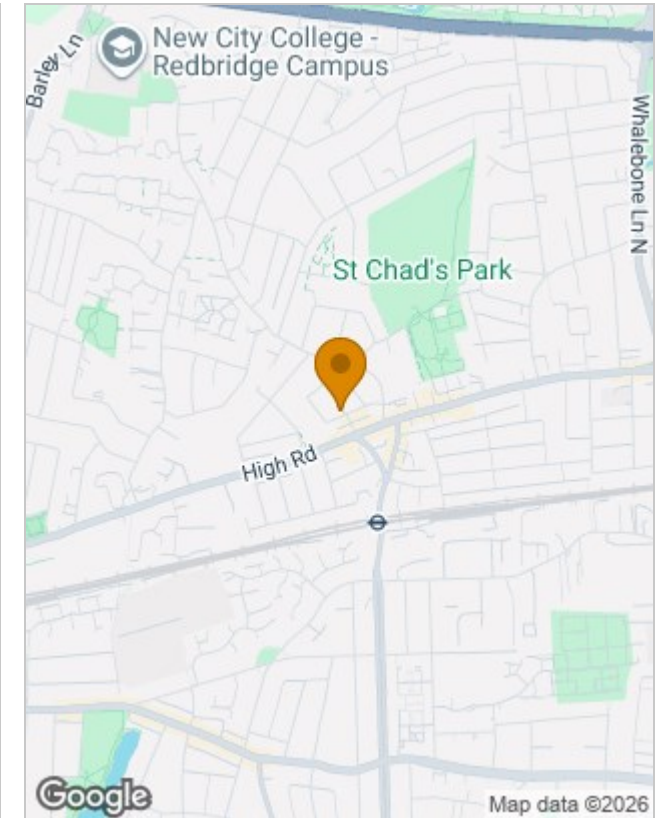


Measured according to RICS IPMS2. Floor plan is for illustrative purposes only and is not to scale. Every attempt has been made to ensure the accuracy of the floor plan shown, however all measurements, fixtures, fittings and data shown are an approximate interpretation for illustrative purposes only. 1 sq m = 10.76 sq feet.

ipaplus.com

Date: 24/6/2026

## Location Map



## Energy Performance Graph

Energy Efficiency Rating	
	Potential
Very energy efficient - lower running costs	
(92 plus) <b>A</b>	
(81-91) <b>B</b>	
(69-80) <b>C</b>	
(55-68) <b>D</b>	
(39-54) <b>E</b>	
(21-38) <b>F</b>	
(1-20) <b>G</b>	
Not energy efficient - higher running costs	
<b>England &amp; Wales</b>	EU Directive 2002/91/EC
Current	Potential
	78
57	

## Viewing

Please contact our Seven Kings Sales Office on 020 8597 7372 if you wish to arrange a viewing appointment for this property or require further information.

The particulars are set out as a general outline only for the guidance of intended purchasers or lessees, and do not constitute, any part of a contract. Nothing in these particulars shall be deemed to be a statement that the property is in good structural condition or otherwise nor that any of the services, appliances, equipment or facilities are in good working order. Purchasers should satisfy themselves of this prior to purchasing.